



## Enhanced Researcher Experience

Powered by [ChronosHub](#)



**Exclusive Early Adopter Program**



# Table of Contents







2	Program Overview
3	What are we Solving
6	The Value of Early Access
7	Opportunity and Value
8	Timeline
9	Participant Feedback
10	Pricing
11	Resources

# Program Overview

Aries' Early Adopter Program (EAP) for Editorial Manager's Enhanced Researcher Experience – powered by ChronosHub – transforms how authors submit and manage manuscripts by delivering a more intuitive, streamlined, and connected publishing journey across the entire publisher portfolio.

This program provides select customers with early access to the Enhanced Researcher Experience ahead of general availability. Participants will have the opportunity to use the solution, provide feedback, and help shape its future development.

## Why Participate?

-  Early access to an intuitive, streamlined, and connected publishing journey across your portfolio
-  Upfront and ongoing pricing discounts for additional journals
-  Direct engagement with our development teams providing insights into potential enhancements
-  Dedicated onboarding and support throughout the program

# What Are We Solving

Today	EM's Enhanced Researcher Experience
Complex Submission Experience	Faster, smarter submissions through a single-page submission form where key details are extracted automatically from the manuscript file – reducing clicks and complexities.
Limited Portfolio Visibility	Provides authors with a real-time control center to track manuscripts across the full publishing workflow, creating a single source of truth for authors. This eliminates the need for multiple logins across journals while enabling publishers to better recognize, understand, and engage loyal authors.
Inconsistent Manual Compliance Checks	Brings greater alignment to guidelines and workflows to make it easier for authors to understand and meet submission requirements prior to submission.
Fragmented Identities	Enables authors to reuse key information such as personal details and affiliations across submissions within a publisher portfolio – reducing manual entry, minimizing errors, and accelerating the submission process. Publisher-level profiles eliminate the need for separate journal logins, enabling stronger author insights and relationship building.



# The Value of Early Access

## Submission Experience

A streamlined single-page intuitive submission form – reducing clicks and complexities while accelerating time to submission

Guided steps with required field prompts

AI-powered metadata extraction pulls keywords, titles, abstract, author details, and funding information from the manuscript file in seconds

Enables authors to reuse key information such as personal details and affiliations across submissions within a publisher portfolio, reducing manual entry, minimizing errors, and accelerating the submission process

The screenshot shows a submission form with the following sections:

- File Upload:** Includes fields for Manuscript File (Manuscript (Demo 2026).docx), Cover Letter (Cover Letter (Demo 2026).docx), and Other Files (None Selected).
- Manuscript Information:** Includes Manuscript Title (Innovative Approaches to Treating Diabetic Foot Ulcers: The Role of Blue Light Photoactivation).
- Abstract:** Contains a text area with the abstract content: "Chronic wounds are a major global health issue, significantly affecting patients' quality of life. These wounds arise when healing fails to restore skin integrity after three months, often impacting adults with conditions like venous insufficiency, pressure ulcers, and diabetes. Approximately 18.6 million diabetics suffer from diabetic foot ulcers (DFUs), which have a five-year mortality rate of 30%, rising to over 70% with major amputations. DFUs are highly susceptible to infection, with around 60% becoming infected and 20% developing severe infections, often leading to limb loss. A key factor in their persistence is the presence of polymicrobial biofilms in nearly 70% of DFUs, which shield bacteria from antibiotics. Common pathogens include Pseudomonas aeruginosa and MRSA. Recent studies indicate that blue light photoactivated Ber-Gen may be a promising treatment for these biofilm-associated DFUs, though further research is needed to evaluate its effectiveness."
- Checkboxes:** Two checkboxes asking if the manuscript has been previously submitted to this journal or another journal, both set to "No".
- Buttons:** "Save as Draft", "Previous", and "Submit Your Manuscript".

The screenshot shows a "My Manuscripts" dashboard with four columns:

- Awaiting Submission (2):** Shows a manuscript titled "Hybrid Optimization of Grid-Integrated Solar-Wind Microgrids for Rural Electrification" with a "Continue Submission" button.
- Under Consideration (2):** Shows a manuscript titled "Advanced Control Algorithms for Battery Energy Storage in High-Penetration Renewable Systems" with a "Received" date of 10/02/2026.
- Transfer Offered (2):** Shows a manuscript titled "Bidirectional optical control of osteogenesis with a light activated vitamin D mimetic" with a "Decision Received" date of 02/27/2026 and a "Respond to Offer" button.
- Manuscript Accepted:** Shows a manuscript titled "Life-Cycle Carbon Footprint Analysis of Grid-Scale Energy Storage Technologies" with a "Decision Received" date of 02/27/2026.

## Manuscript Tracking

Centralized access to all submissions and publishing history

Guided manuscript management with actionable next steps

Real-time manuscript status updates

Portfolio visibility into review, revision, and decision milestones

## Journal Catalogue Venue

A searchable and filterable catalogue of publication venues providing journal recommendation insights to authors

## Journal Recommender

Recommend the right journal to your authors based on essential information like Impact Factor and access model

## Resources

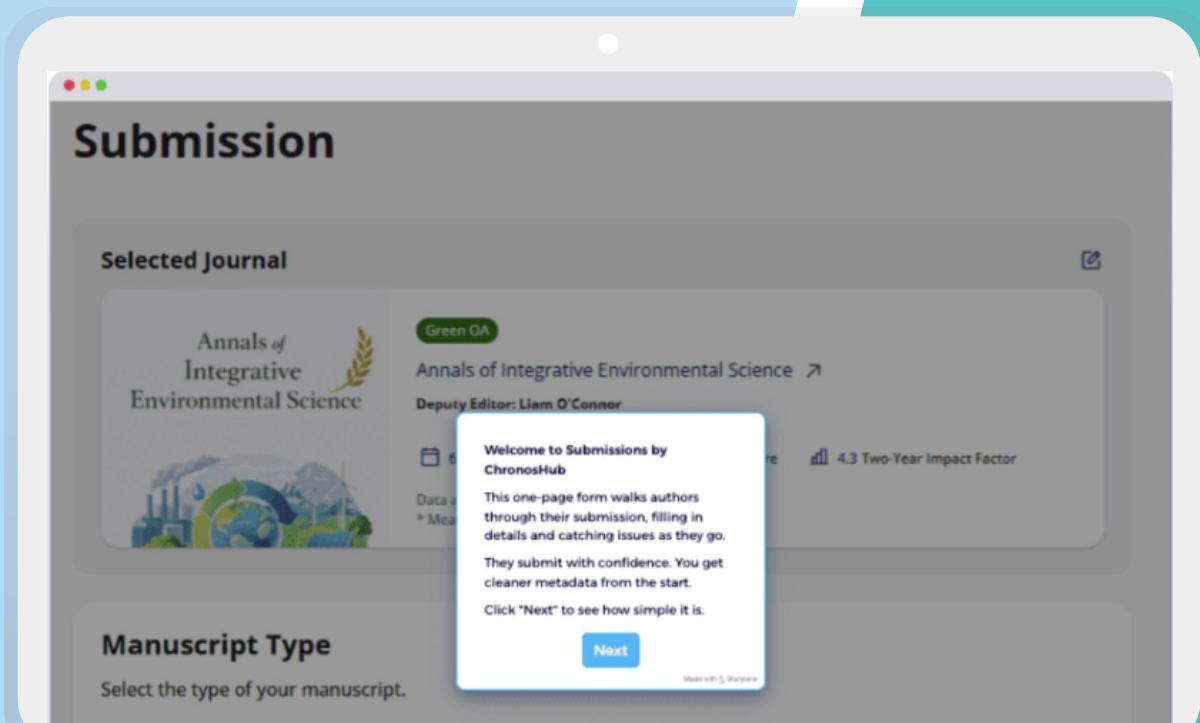
Provide key resources such as author guidelines, submission tutorials etc. to inform authors of submission requirements and service offerings

# See it in Action!



## Enhanced Researcher Experience

Powered by [ChronosHub](#)



# Opportunity & Value

## For Publishers

**Improved Researcher Engagement:** Deliver a more intuitive and streamlined submission journey that increases overall author satisfaction and drives loyalty and repeat submission

**Portfolio Insights:** Unified records highlight author contributions across journals

**Process Alignment:** Clearer guidelines and aligned workflows make it easier for authors to understand and meet submission requirements prior to submission

**Journal Discoverability:** Guide authors to the right journals the first time, reducing off-target submissions and ensuring requirements are met before submission



# For Authors

Authors submitting to participating journals benefit from a streamlined submission workflow that reduces friction and improves clarity at every step. EM's Enhanced Researcher Experience provides a clear, visual display of manuscript status at a glance while guiding authors seamlessly through the submission journey – eliminating the need to manage multiple logins

**Centralized Management:** Take action directly from the dashboard with submission management, status updates, and guided next steps

**Transparency:** Portfolio visibility into review, revision, and decision milestones

**Smart Extraction:** AI-powered meta data extraction automatically pulls titles, abstract, author details, and funding information from the manuscript file in seconds

**Intuitive Design:** An innovative, streamlined single-page submission experience – reducing clicks and complexities

**Submission Efficiency:** Enables authors to reuse key information such as personal details and affiliations across submissions within a publisher portfolio – reducing manual entry, minimizing errors, and accelerating the submission process



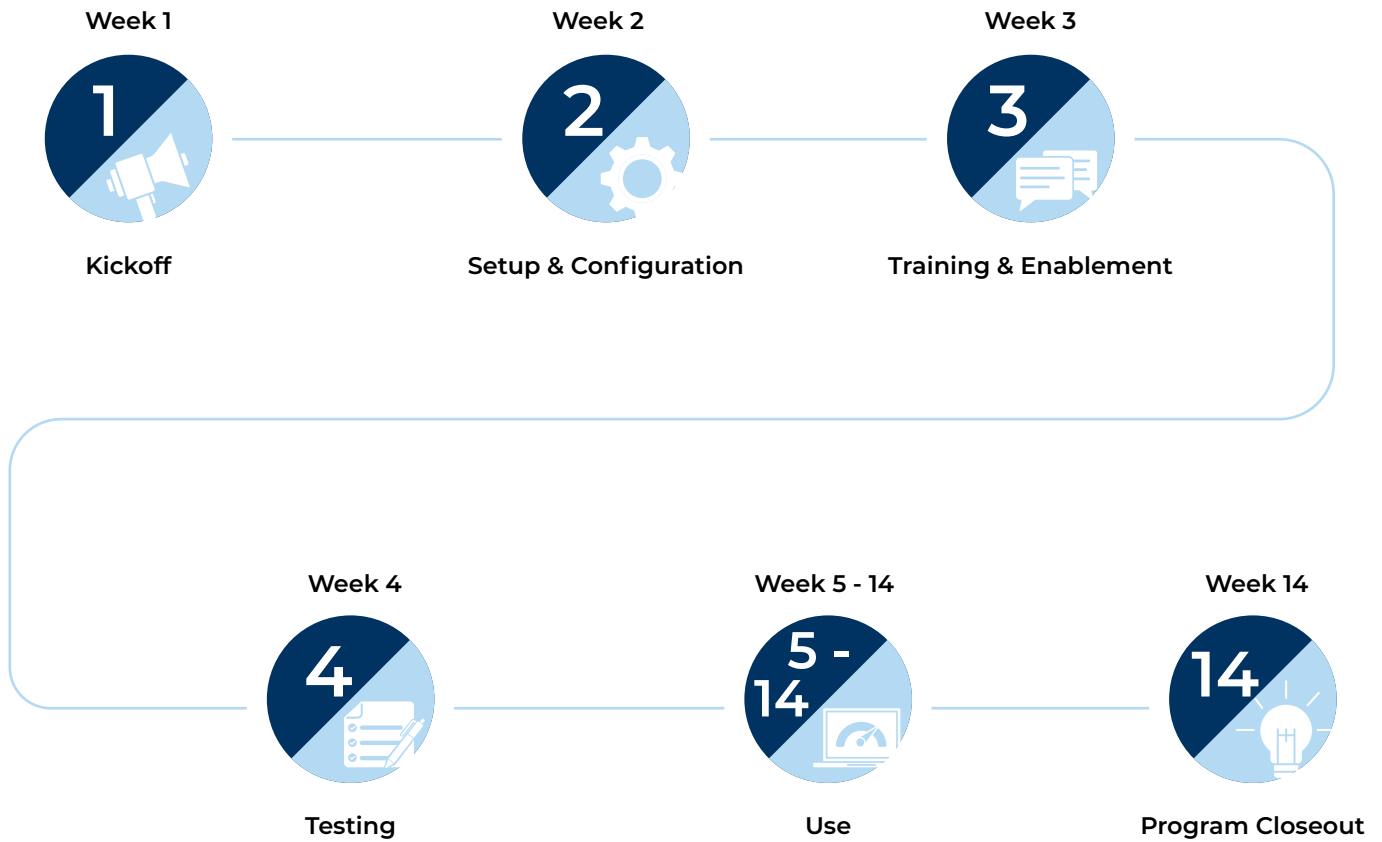
**6 minutes**  
typical submission time



**86% of Authors**  
rated submission experience  
'easy' or 'very easy'

**“Never submitted  
a manuscript faster  
than today!”**

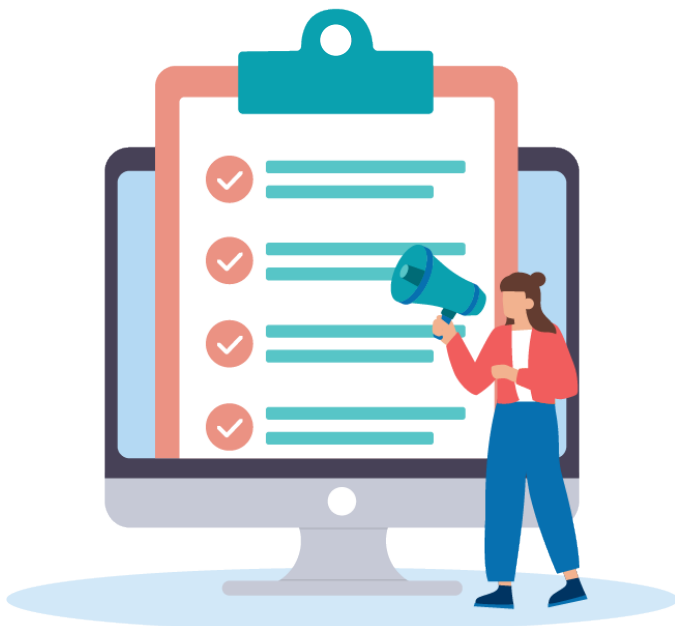
# Early Adopter Program Timeline



Note: All timing is subject to change based on setup

# Participant Feedback

Requests	Purpose	Frequency/Notes
<b>EAP Review Calls</b>	Discuss progress, challenges, insights, and suggestions for improvements	Scheduled
<b>Product/ Workflow Testing</b>	Actively use and test	Scheduled
<b>Collaboration &amp; Engagement</b>	Participate in discovery sessions	As available
<b>Feedback on Support &amp; Onboarding</b>	Provide input to improve participant experience and program effectiveness	Ongoing



# Early Adopter Program Pricing

Components	Unit	Pricing
One-time setup fee	Per journal	\$500 with \$1,000 minimum
Per submission fee	Per submission	25% addition to current per submission fee
Maintenance fee	Per publisher	\$1,000 Annually

The Publisher shall not pay setup and maintenance fee during the duration of the Early Adopter Program (EAP).



## Post Early Adopter Program:

For new journals joining after the EAP End Date and within twelve (12) months thereafter, no setup fee will apply.

In addition, no maintenance fees will be charged for the first twelve (12) months.

[Enhanced Researcher Experience Flyer](#)

[Enhanced Researcher Experience Early Adopter's Program FAQs](#)

[ChronosHub Resource Webpage](#)